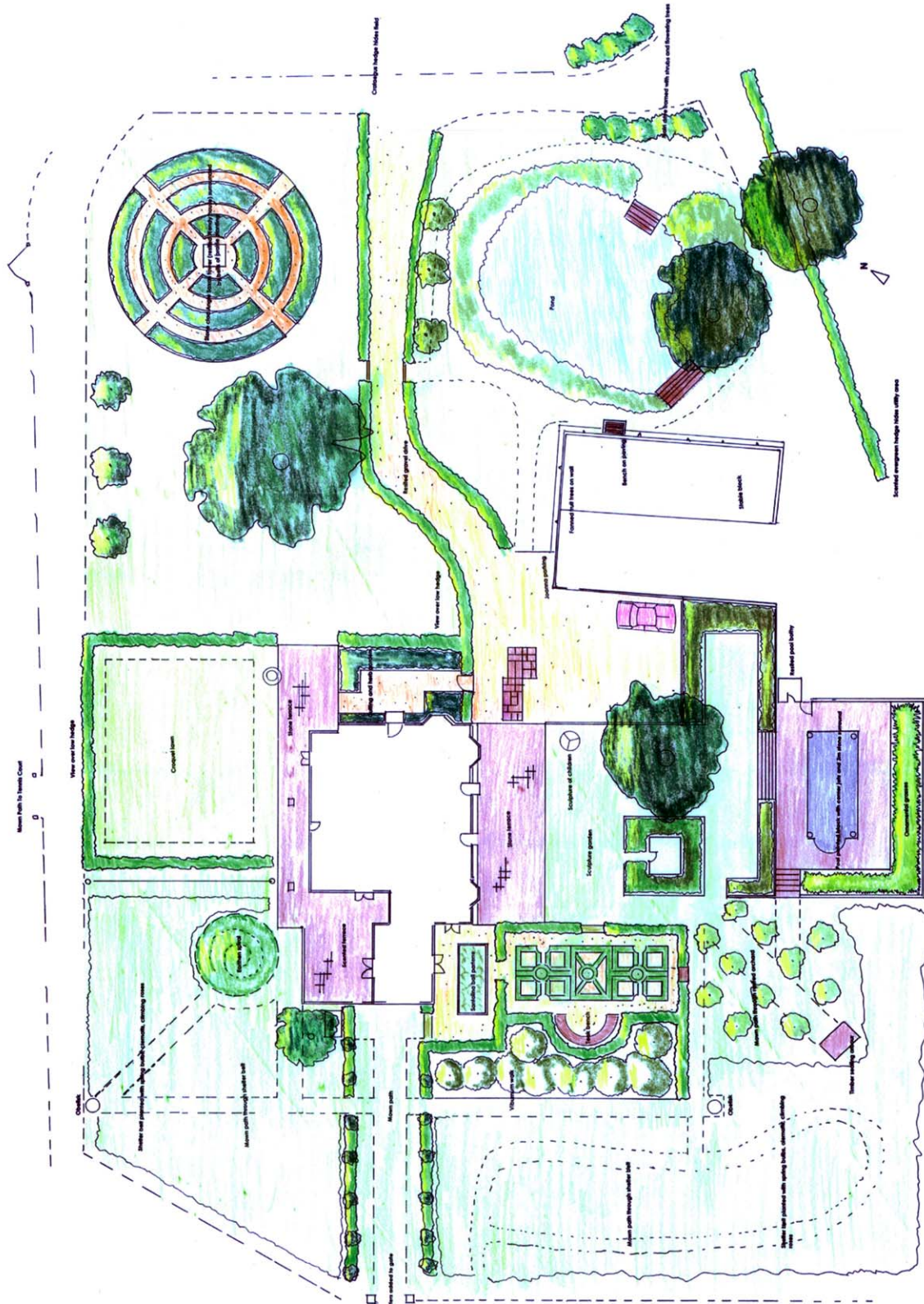


3514 Country Club Road
Birmingham, AL 35213
205.324.7476
mail@junemays.com

JUNE MAYS garden design LLC



3514 Country Club Road
Birmingham, AL 35213
205.324.7476
mail@junemays.com

JUNE MAYS
garden design LLC



Concept

This plan is designed to focus on the spectacular views to the north and southeast by using low hedges in those directions, by siting planting and activity areas to north and east, and by relocating parking.

Since the barns next door are too large to disguise, the plan is to draw attention down and away from them through imaginative planting in a sculpture garden which features the old bothy and a sculpture of the children, through fluid movement of tall grasses around the newly painted jet black pool, and by emphasizing an axis from the front door to the pool.

History of the site will be honoured by the Wendy house being resited, clad in stone as an "Anglo Saxon Tower", surrounded by colourful low maintenance prairie planting.

In its place, an earthen spiral is to be constructed of the dredges of the pond and any other excavated soil, then planted with ferns, native wildflowers, and spring bulbs.

The drive has been resited, leading to the front of the house and graveled parking for four cars. The entrance to the house is made more important by paving stones set in gravel leading from the parking area to a new stone terrace across the front of the house.

The croquet lawn will be resited to the north of the house at ½ regulation size according to British Croquet Association standards. This area can double as playing field for other sports.

An herb and cutting garden using Joanna's favorite colours will be located outside the kitchen door.

"Mum's parking space" is only a few steps away, making unloading the car easy.

The orchard will be resited and furnished with a restful seating arbour.

New gardens include viburnum walk, knot garden, and parterre of santolina balls – all low maintenance.

Piers will be added to the gate to the west to make the view Broughton Village and bell tower more important.

Paths will be mown through the shelter belt, planted with spring bulbs, woodland plants, and clematis and roses climbing in the shrubs.

The existing walled terrace will be furnished with pots of scented plants.

The pond will be dredged, duckweed and bulrushes removed and placed with two jetties for viewing the lovelier replacement plants.

A scented evergreen viburnum hedge will hide the compost area.

Client: Lambert

June Mays

Project: Stainswick Manor

Job No:

Scale: 1:200

Date: 13 June 2005

Revisions: Drawn By: JBM